



Align[®] Adjustable Height Workbench Assembly Instructions

Motorized Base, Hand-Crank Base, Slide Leg Base

Tools Required:

5/32 Hex Key

3/16 Hex Key

9/16 Opened-end Wrench – Glides

7/16 Opened-end Wrench – Casters

#2 Phillips head Screwdriver

Small to medium Hammer or Mallet

Safety Glasses

Optional:

Electric/Cordless Torque Variable Screw Gun with #2 Phillips Head Bit


Read instructions entirely before assembling

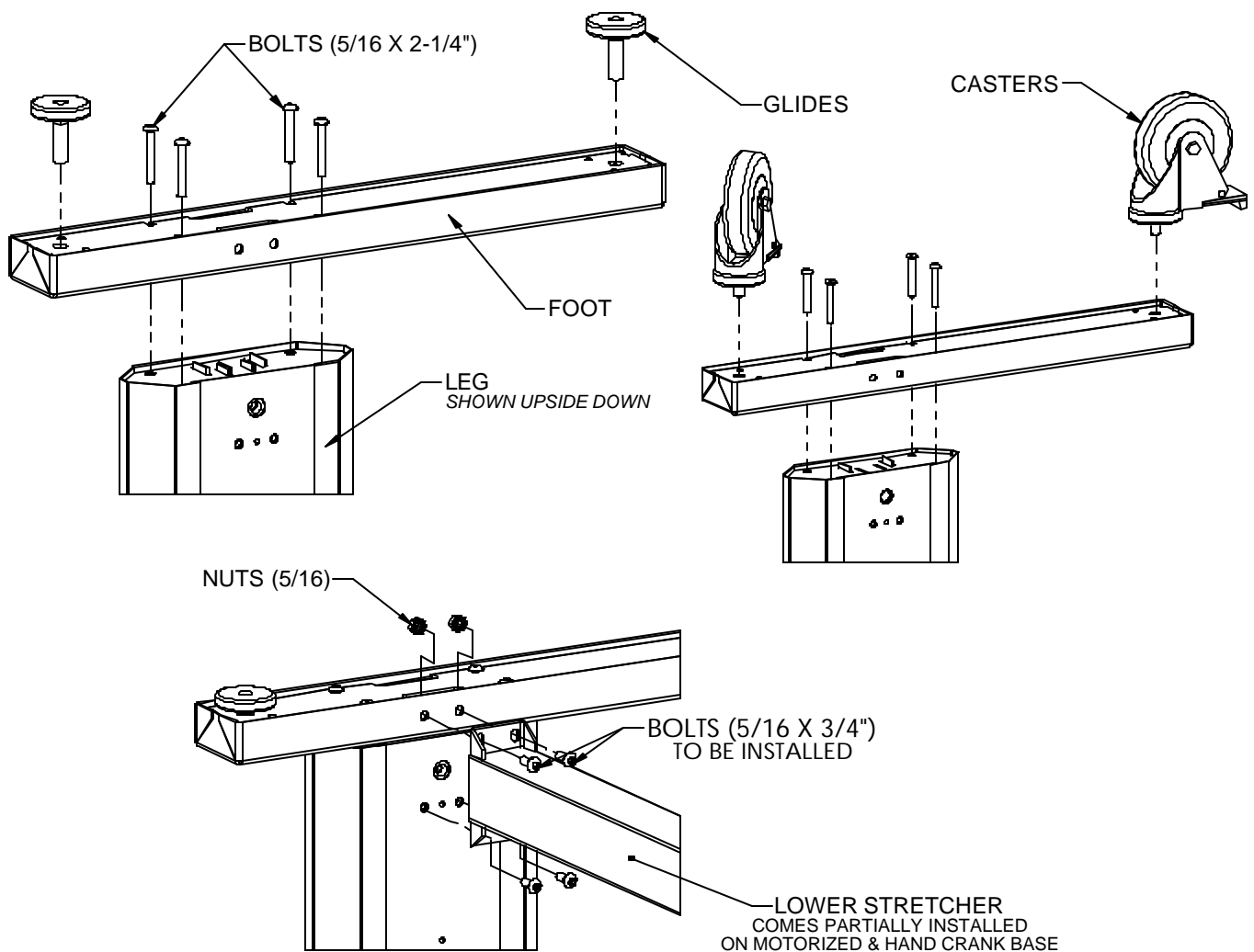
Glide Feet Assembly

Any Leg

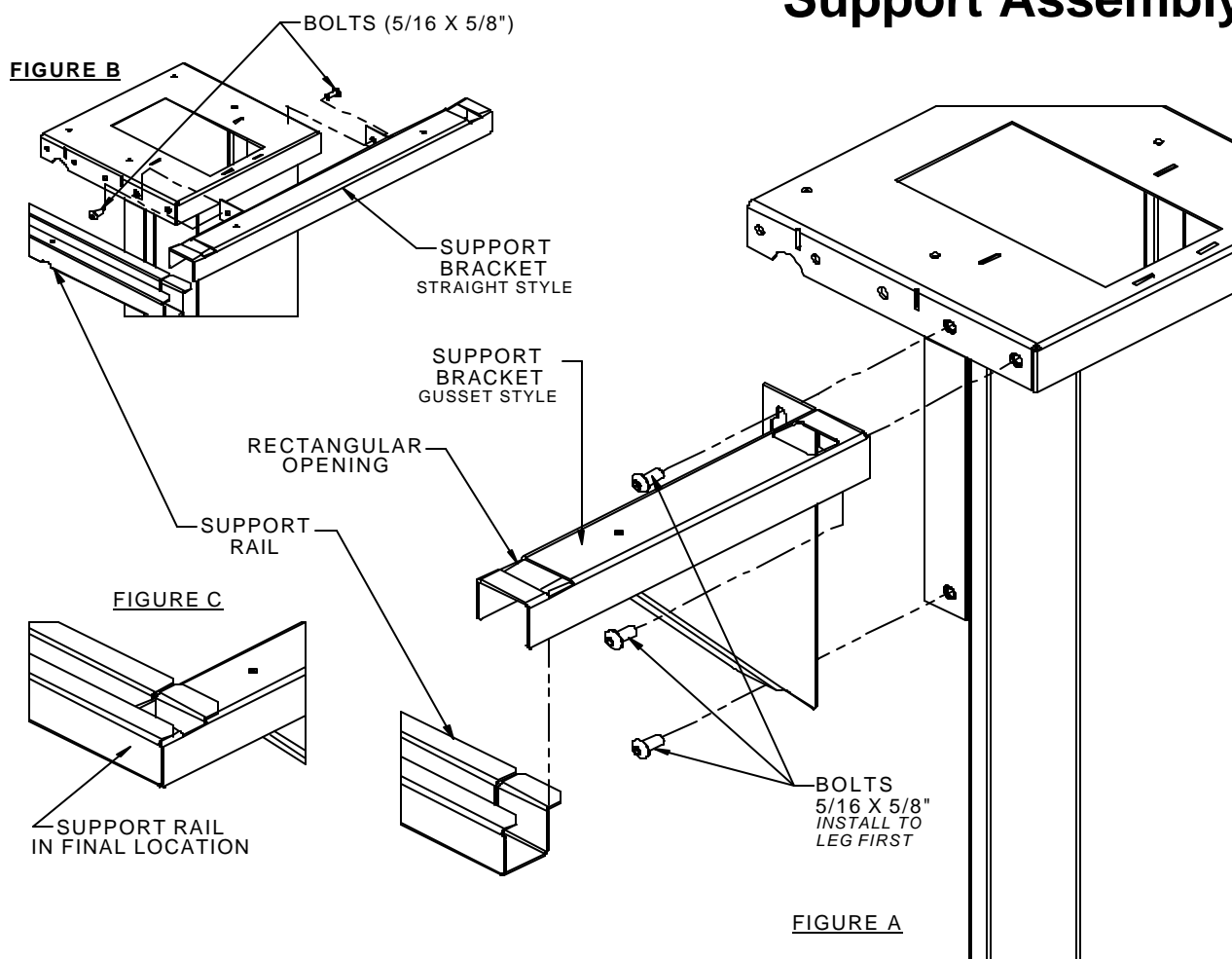
Lower Stringer not shown in some views for clarity

Steps:

- a) Loosely attach Foot to Leg
Use (4) 5/16 x 2-1/4 long Hex drive bolts
If rear justified be sure longer end faces the front of the bench
- b) Thread leveling Glides or Casters fully into Foot as shown.
 ***Be sure the casters bottom out on foot!***
- c) Attach the Foot to the Lower Stringer as shown
Use (2) 5/16 Hex drive bolts and (2) nuts
- d) Repeat steps (a) through (c) for other Leg then tighten all hardware, including all Lower Stringer hardware.



Support Assembly



Steps:

Gusset Style Supports (Refer to Figure A)

- a) Thread bolts into the holes shown
Use (3) 5/16 x 5/8 long Hex drive bolts
-Keep bolts from bottoming all the way by at least 1/8"
- b) Drop the Support Bracket slots behind the heads of the 3 bolts
Set/Push down into place & tighten all bolts. Repeat on opposite side or as needed

Straight Style Supports (Refer to Figure B)

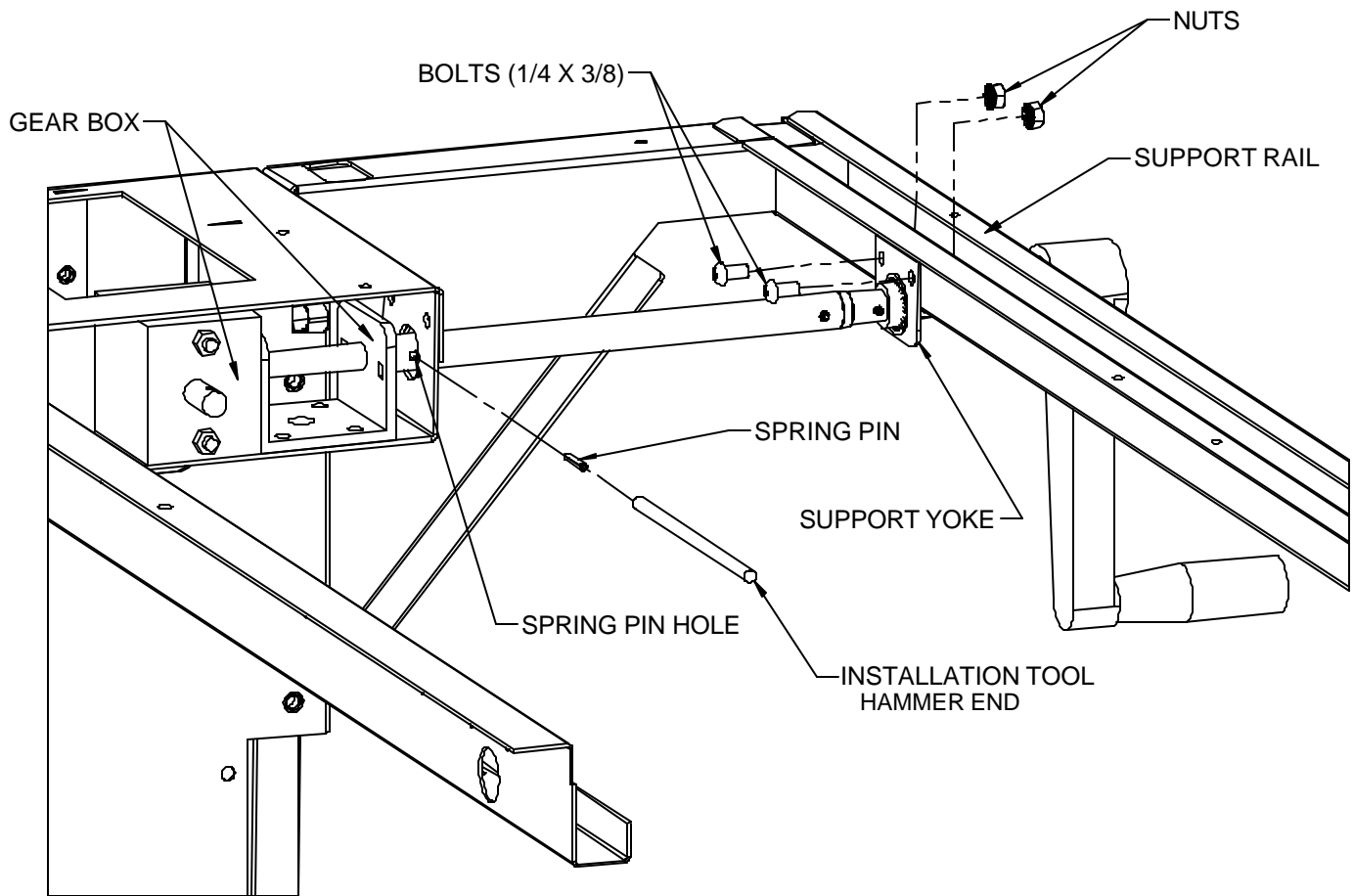
- c) Attach Support as shown
Use (2) 5/16 x 5/8 long Hex drive bolts. Repeat on opposite side as needed

Support Rail to any Support Bracket (Refer to Figures A, B & C)

- d) Insert the end tabs of the Support Rail up from below through the rectangular openings of the Support Brackets then rotate up & push into place

Note: Fastening the Support Rail to the work-surface using all the holes provided is necessary & will secure the Support Rail in position (see page 6).

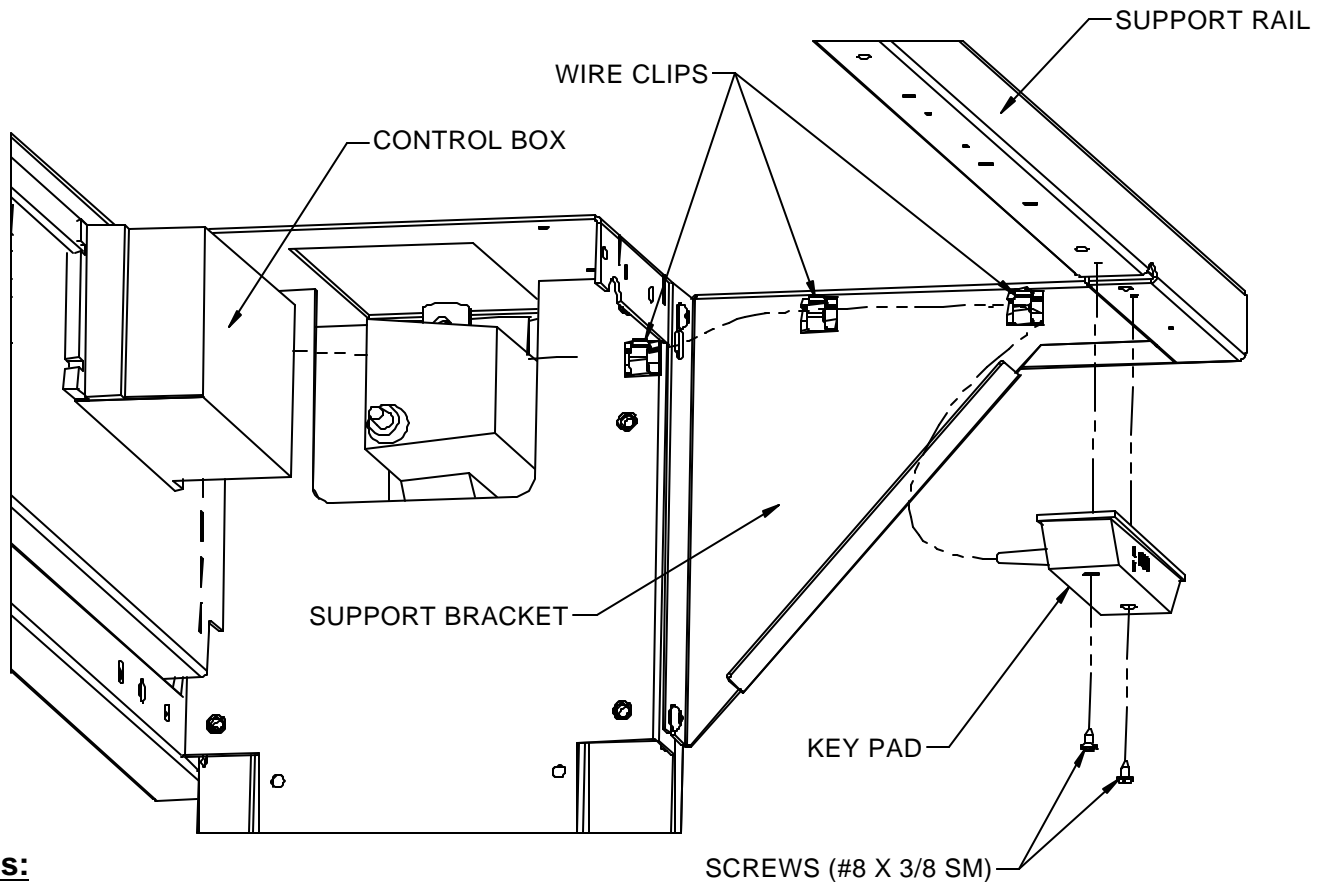
Hand-Crank Assembly



Steps: (Safety glasses should be worn when installing the Spring-pin)

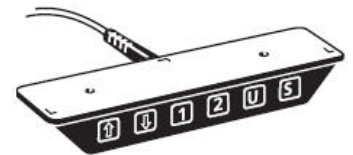
- a) Slide the open end of Hand-Crank Assembly over Gearbox Shaft as shown
- b) Attach the Support Yoke to the Support Rail
Use (2) 1/4 X 3/8 long Phillips head bolts & (2) nuts
- c) Turn the Crank Assembly to align hole with hole in the Gear Box Shaft
Insert the Spring-Pin into the Installation Tool (*provided*) and use hammer to start Spring Pin
Make sure Spring Pin is centered on shaft as the final position

Keypad Assembly & Programming - Motorized Bench



Steps:

- a) Fasten Keypad to Support Rail
Use (2) #8 x 3/8" Phillips head sheet metal screws – Do not over tighten
- b) Plug the Keypad cord into the Control Box
Loop any excess wire through the cut-out in the rear of the Support Rail
- c) Hook (3) Wire-Clips over the wire
Peel off backing from the Wire-Clips
Press into the positions shown
- d) Once Base is complete and plugged in;
It is possible to store up to *four heights into memory as follows:
 1. Using Keypad arrow buttons adjust base to desired height
 2. *Press and release button labeled **U**, Followed by either **1** or **2**.
(This determines which user)*
 3. Press and release button labeled **S**.
 4. With-in two seconds press and release any number button to set into memory
 5. Repeat as needed or to replace an existing memory setting
 6. To recall a stored setting press and release button **U** followed by the user number. Then press and hold the desired memory button until the base stops.

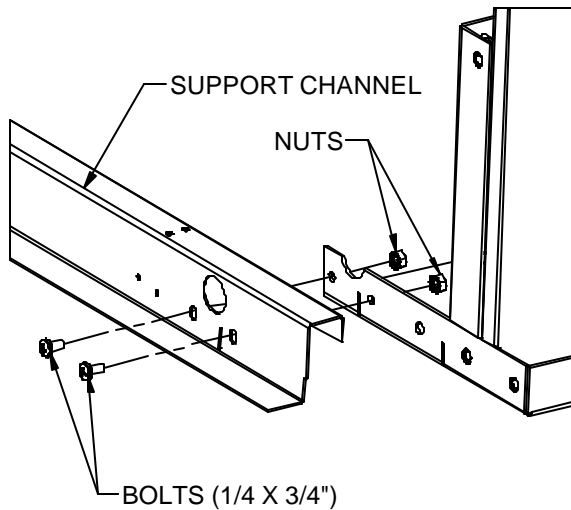


*Keypads without the "U" button have only three memory heights.

*Disregard step 2 for keypads with-out the "U" button.

Slide Leg Base Assembly

Start with legs upside down on floor



Center Justified Bases:

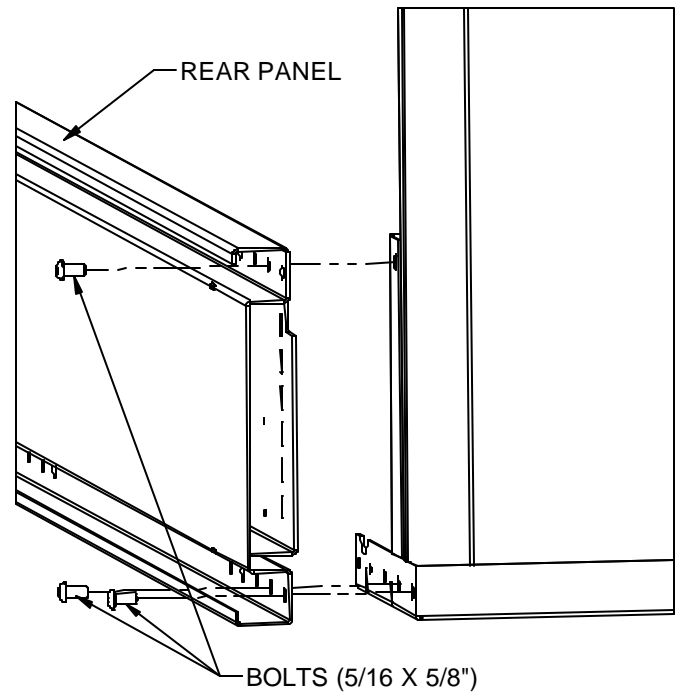
Steps:

- Loosely attach support channel(s) as shown
Use (4) 1/4 x 3/4 long Phillips head bolts and (4) nuts
- Move other leg into position and repeat step (a)
- Tighten all hardware from steps (a) & (b)

Rear Justified Bases

Steps:

- Loosely attach Rear Panel
Use (3) 5/16 x 5/8 long Hex drive bolts
- Move other Leg into position and repeat step (a)
- Tighten all hardware from steps (a) & (b)



Both Bases

Steps:

- Refer back to page 1 to install Feet and Rear Panel, then proceed to step (e)
- Loosen Knob on Legs enough to allow Inner column to move – adjust to desired height and tighten the Knob so that the Bracket fully engages and locks both Columns together.



Caution: Inner Column of Leg will drop down suddenly if released !

Have a second person hold the Foot/Inner Column in place while tightening the Knob.


Once the Knob is tight test it by pulling up on Foot to make sure Columns are locked together. Repeat steps (d) through (e) for other leg

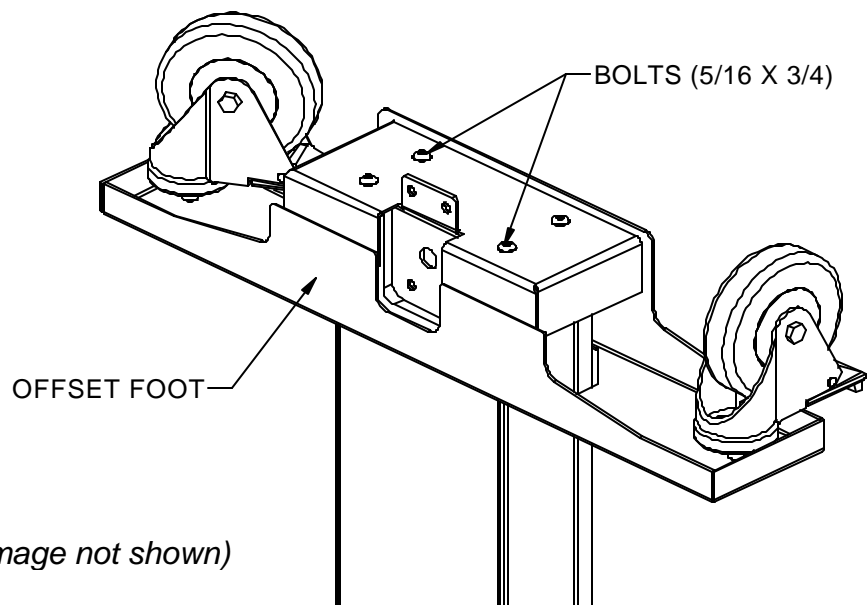
- Turn Base upright and refer back to page 2 to install the Support Brackets

Offset Caster Foot Assembly

Lower stretcher not shown for clarity

Step:

- a) Attach Offset Foot to Leg
Use (4) 5/16 x 3/4 long Hex drive bolts
- b) Thread Casters into Foot - as shown.
Be sure the casters bottom out on foot! 
- c) Attach Lower Stretcher
Use (2) 5/16 x 3/4 long Hex drive bolts & (2) nuts
Refer to page (1) if needed for Lower Stretcher assembly
- d) Repeat steps (a) through (c) for other Leg then tighten all hardware



Work-Surface Assembly (*Image not shown*)

Steps:

Note if installing a hanging drawer be sure to do so prior to attaching the work-surface

- a) Locate work-surface onto base assembly
Each side/end overhang should be about 1/2"
Rear justified bases should be flush to the back of the Rear Panel
Center justified bases should divide the overhang equally front & rear
- b) Attach Legs and Support Rails/Brackets to work-surface via holes provided
Use #10 x 3/4 long Phillips head wood screws
 - Only two screws per Leg are required
 - Use screws in all holes provided on Support Rails/Brackets
- c) Level Base as needed with glides once in final position or location

Align® is a trademark of Lista International Corp.
Making Workspace Work® is a trademark of Lista International Corp.

Creation Date Document Number
5-08-2007 MD047A3 Rev. 3

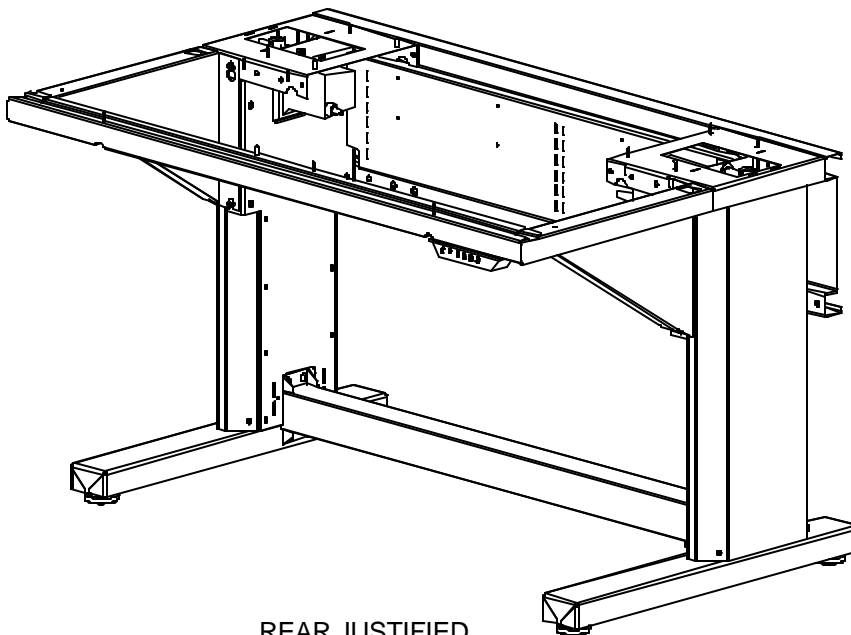
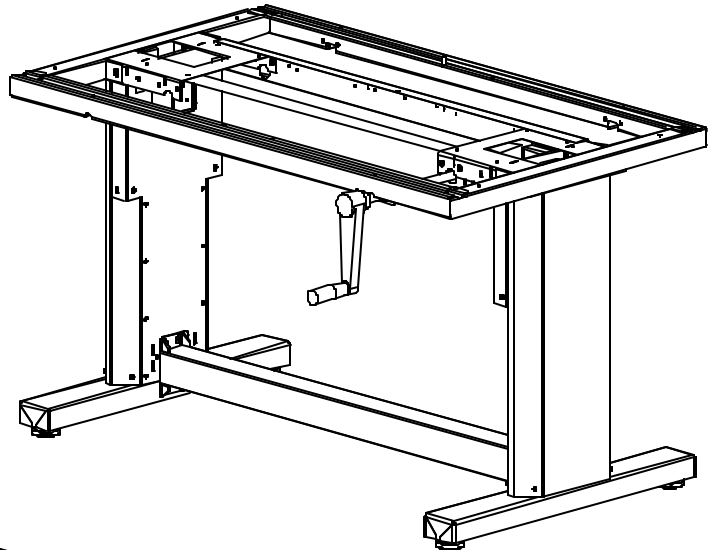
This document is proprietary information of Lista International Corporation. Unauthorized reproduction of any portion of this document is prohibited without written consent of Lista International Corporation. The material in this document is for informational purposes only. It is subject to change without notice.

© 2007 Lista International Corporation
106 Lowland Street
Holliston, MA 01746-2094
E-mail: sales@listaintl.com

All rights reserved

For questions or technical support call **1-800-722-3020**

CENTER JUSTIFIED



REAR JUSTIFIED

 **LISTA**
making workspace work®